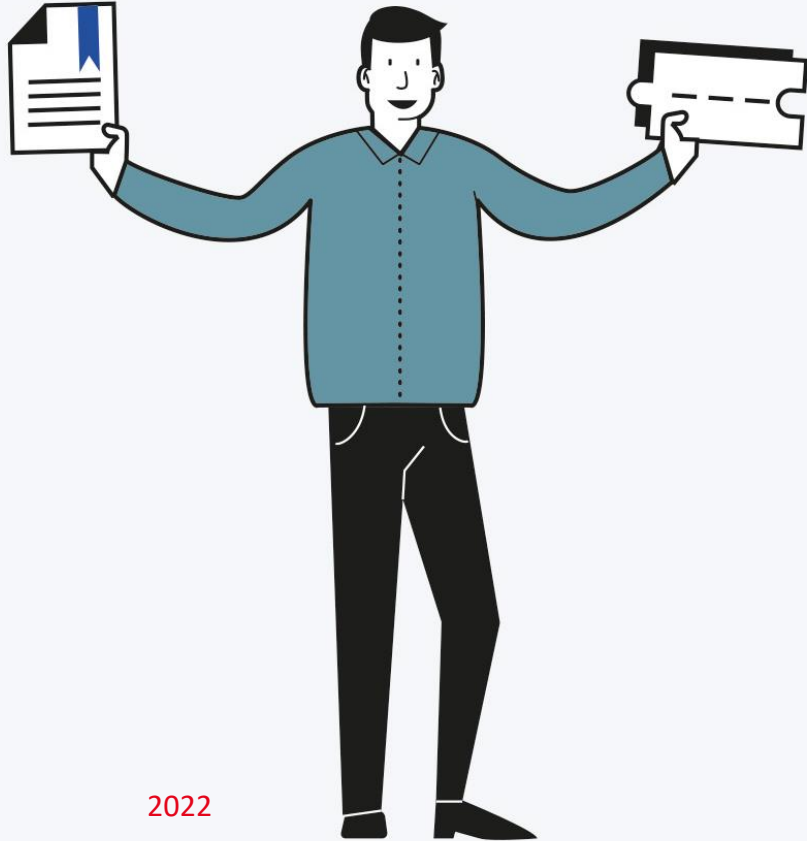


# The Dutch Early School Leaving approach (ESL)



2022

**Ingrado**

# Main topics

1. ESL = integrated approach
2. Time line: compulsory education and ESL
3. What is the cause of ESL?
4. What is an early school leaver?
5. What do we deploy in the ESL-approach?
6. ESL-regions: the local approach
7. Network ESL
8. Focus points



# Early School Leaving (ESL)

## What is the cause of ESL?:

- a wrong choice of study;
- different expectations of school/study;
- rather work than school;
- personal and/or mental problems

## What is an early school leaver?:

- 12 to 23 years old;
- not enrolled in a school;
- no basic qualification;
- not from a special needs or practical school.

## The early school leaving approach is an integrated approach:



**Prevention of early school leaving**



**Improvement tailored education**



**Better cooperation between education and care**



**creating more personalised learning pathways**



**a fluent transition from school to work**

## What do we deploy in the ESL approach?



### Basic Qualification (BQ)

= VET (MBO) level 2 of higher, secondary school (HAVO or VWO)

With a basic qualification, young people have:

- more chance of sustainable work;
- more chance to keep their job;
- more often a permanent employment contract;
- more income, also as an adult.



### Flexible/personal learning pathway

= learning and/or working or daytime activities

For young people for whom this is better suited.:

- a basic qualification is not viable;
- work fits better than school;
- jobcoaching;
- sheltered workplace..

compulsory education, compulsory qualification and early school leaving



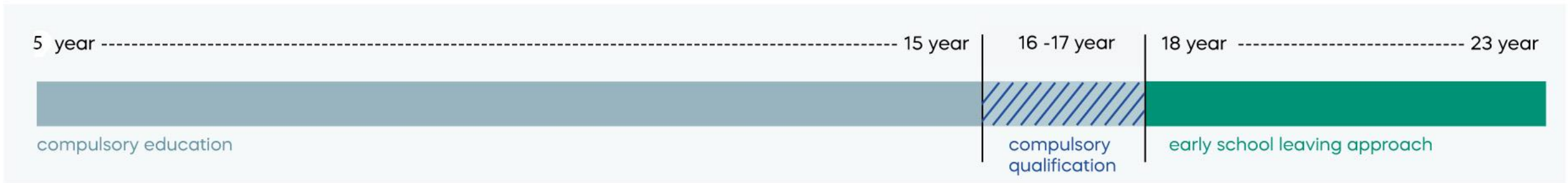
# The early school leaving approach is an integrated approach

---

## The early school leaving approach is an integrated approach:



# Timeline





## What is the cause of ESL?

- A wrong choice of study
- Different expectations of school or study
- Rather work than school
- Personal and/or mental problems

## What is an early school leaver?

- 12-23 years old
- Not enrolled in a school
- No basic qualification
- Not from a special needs or practical school





## What do we deploy in the ESL approach?



### **Basic Qualification (BQ)**

= diploma VET level 2 or higher, secondary school

### **With a basic qualification, young people have:**

- more chance of sustainable work;
- more chance to keep their job;
- more often a permanent employment contract;
- more income, also as an adult.



# What do we deploy in the ESL approach?



## **Flexible/personal learning pathway**

= learning and/or working or daytime activities

### **For young people for whom this is better suited:**

- a basic qualification is not viable;
- work fits better than school;
- jobcoaching;
- sheltered workplace.

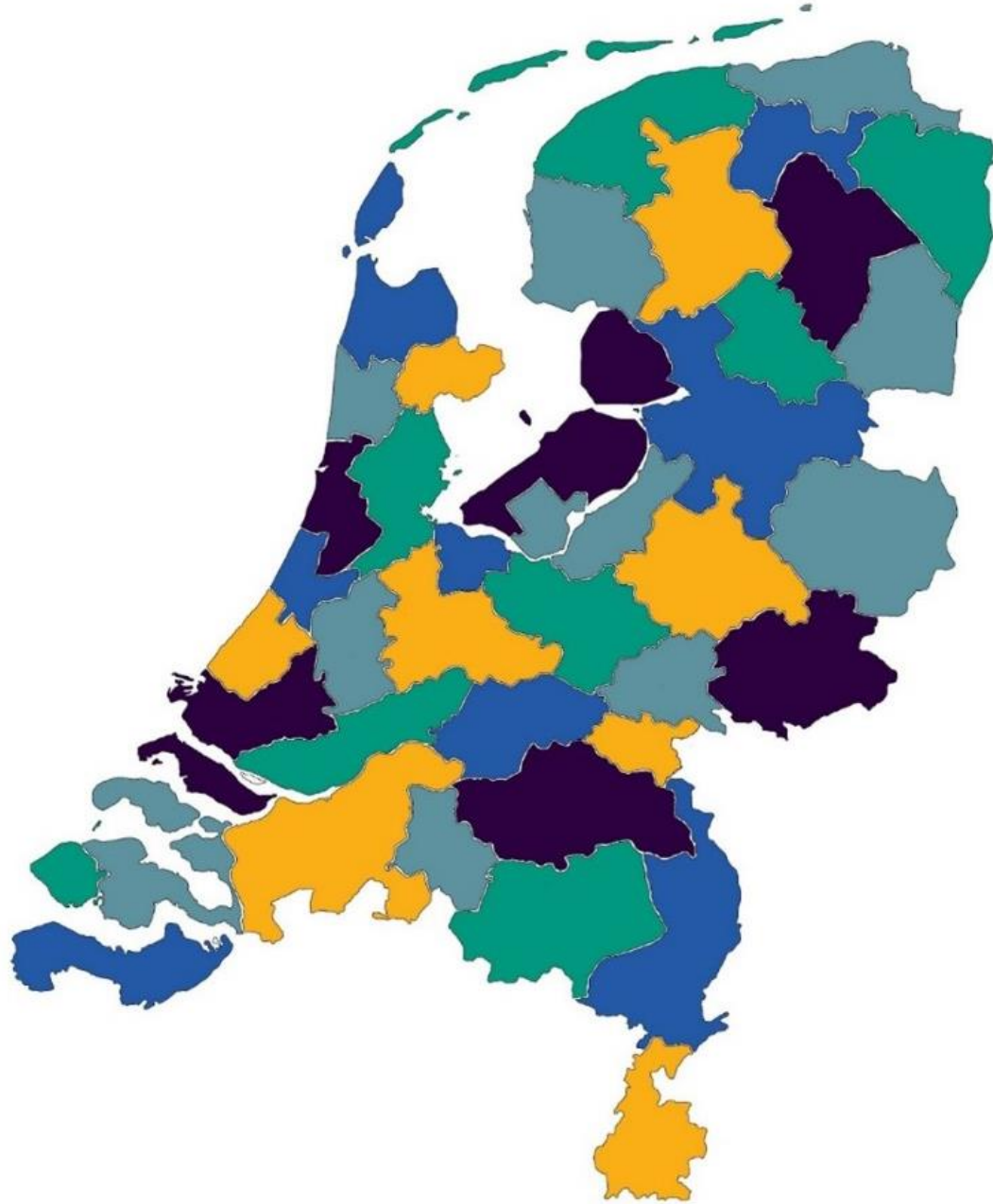




## What do we deploy in the ESL approach?

Example of personalized/flexible learning pathway:

Practical Statement



## Early school leaving regions

- **40 Early school leaving regions**
- Some regions are divided into subregions
  
- **Every region has:**
  - 1 contact town
  - 1 contact VET (MBO)
  - 1 regional ESL-team
  
- **Every ESL-team has:**
  - 1 regional coordinator
  - ESL-coaches
  - Administrative support

# Regional approach

- **School attendance 18+**
  - Focus on attendance.
  - Reporting absenteeism
  - School and ESL-team working together
- **Report and registration of early school leavers 18-23 year.**
  - Registration system: reporting ESL-ers
  - Check special situation
  - Getting in touch
  - House visits
- **To approach and guide/coach ESL-ers, aimed at a return to school or a combination of school/work.**
  - Coaching aimed at:
    1. Offer help/support
    2. What does he or she want?
    3. What is possible? (school, work, combination, daytime activities)



# Network Early School Leaving (ESL)

Ingrado





## Focus Points

1. Expanding ESL from 18-23 years to 18-27 years

2. Transition school to work

*- Students leave school with a diploma and a job!*

**Every young person has  
the right to development**



**[www.ingrado.nl](http://www.ingrado.nl)**